

DVA WAXIE-PASTE



All occlusal, seating and adjusting products work to some degree. Everyone uses something! But, DVA'S NEW, AMAZING 'WAXIE-PASTE' SIMPLY DOES IT ALL!

KEY BENEFITS

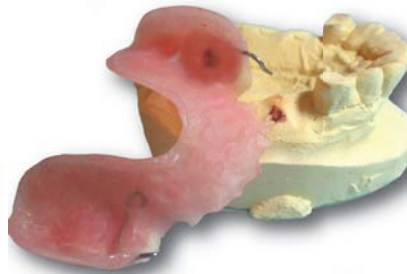
GREAT FOR MARKING AGAINST SOFT-TISSUE MODELS!

- Versatile**
 - Ideal for relieving sore spots during denture adjustment as well as accurate crown & bridge seating.
- Clean**
 - Totally water soluble!
- Precise**
 - Apply only the amount precisely where you want.
- Fast**
 - Easy to apply & marks repeatedly.
- Economical**
 - Absolutely no waste.

USES



Seating Interferences



Denture Adjustments



Interproximal Contacts



Occlusal Adjustments

INSTRUCTIONS

CROWN & BRIDGE (Laboratory) Applications:

Simply apply to any desired surface using a clean, rather firm brush (provided in the Introductory Assortment) and work the two areas together; you'll be amazed at how totally clean & accurate your 'indicating marks' will be.

Waxie-Paste can be accurately applied to interproximal and occlusal surfaces, as well as the inner surfaces of crowns. The resultant marking transfer indicates 'problem areas' that are easily readable.

DENTURE (Operatory) Applications:

Apply a small amount of Waxie-Paste to a cotton swab, and transfer to the affected area of the patient's tissue. Seat the denture into position with reasonable pressure to transfer a red mark at the exact location of the offending area onto the denture. Remove indicated area from the denture with an appropriate rotating instrument.



800.228.6696 951.270.0606
www.dentalventures.com

NEW

FOUR EXPANDED USES of WAXIE-PASTE!

1.



Fig 1. Waxie-Paste applied to soft tissue prior to marking abutment.



Fig 2. Stock abutment in place being marked for adjustment.



Fig 3. Tissue-side of abutment precisely marked for adjustments.

2.



Fig 1. Bridge returned to lab with acrylic added to tissue side marked for accurate reduction of model and extension of porcelain.

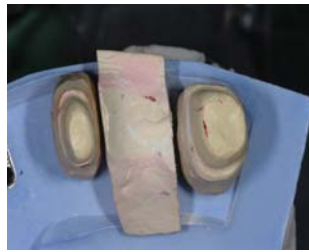


Fig 2. Small dot indicating desired adjustment spot.

3.



Fig 1. Waxie-Paste painted onto sulcus in preparation of adjusting custom abutment.



Fig 2. Precise marks indicating exact points requiring adjustment.

4.



Fig 1. Marking the interior wall of anterior matrix.



Fig 2. Waxie-Paste marks indicating precise areas to adjust Astra UCLA abutments.



Fig 3. Final adjustments of UCLA abutments.

Photos Courtesy of Chris Hale, CDT; Champions Crown & Bridge Laboratory; Houston, Texas

